



Sayı : 38591462-400-2020-2096

30.07.2020

Konu : Yabancı Bayraklı Gemi Çalıştırma İzni Hk.

Sirküler No: 877

Sayın Üyemiz,

Ulaştırma ve Altyapı Bakanlığı Denizcilik Genel Müdürlüğü'nün 30.07.2020 tarih ve E.42455 sayılı yazısı ile, Devlet Su İşleri Genel Müdürlüğü'nün 29.07.2020 tarihli ve 43015 sayılı yazısından bahisle; Türkiye Cumhuriyeti Hükümeti ile Kuzey Kıbrıs Türk Cumhuriyeti (KKTC) Hükümeti arasında 19 Temmuz 2010 tarihinde imzalanan "KKTC'nin Uzun Vadeli Su İhtiyacının Karşılmasına İlişkin Hükümetler Arası Anlaşma"sı gereği Devlet Su İşleri (DSİ) tarafından gerçekleştirilen takribî 80 km uzunluğundaki "Deniz Geçişi İsale Hattı"nın 15 Haziran 2015 tarihi itibarıyla devreye alındığı, ancak söz konusu isale hattında 09 Ocak 2020 tarihine meydana gelen bir arıza nedeniyle KKTC'ye su iletiminin durdurulmak zorunda kalındığına değinilerek, arızanın tespitine yönelik yapılan sualtı tetkikleri neticesinde, 10 (on) adet askılı sistemin değiştirilmesinin gerektiğinin tespit edildiği, arızanın giderilmesi için öngörülen on adet segmentin sökülerek yenilerinin takılmasına yönelik deniz operasyonunun gerçekleştirilebilmesi için; spesifik olarak deniz veya açıkdeniz özellikli sualtı işlerinde kullanılmak üzere tasarlanıp imal edilmiş bulunan ve üzerinde yüksek kapasiteli vinçler bulunan, Dinamik Konumlama 2 (DP2) teçhizatlı, daha önce birçok denizaltı operasyonunda görev yapmış deneyimli mürettebat ile donatılmış Bahama bayraklı "OLYMPIC CHALLENGER", İtalya bayraklı "IEVOLI IVORY", "ASSO VENTOTTO" ve "ASSO VENTIQUATTRO" isimli gemilerin KKTC'ye su temin edilmesi amacıyla tesis edilmiş isale hattındaki arızaların giderilmesi operasyonunda kullanılması amacıyla 03 Ağustos - 30 Kasım 2020 tarihleri arasında faaliyet izni verilmesi talep edilmektedir.

Bu itibarla, yukarıda isimleri anılan gemilerin teknik özellikleri ile ekipman bilgileri İlgi yazı ilişikinde gönderilmekte olup, Odamıza kayıtlı üyelerimizin envanterinde söz konusu geminin eşdeğerinde ve yukarıda bahsi geçen onarım faaliyetini gerçekleştirme kabiliyetinde Türk bayraklı bir geminin olup olmadığı hakkındaki bilgilerin 05 Ağustos 2020 tarihi mesai sonuna kadar Odamız kayıtlarından araştırılarak elde edilecek bilgilerin ivedilikle Bakanlıklarına iletilmesi istenmektedir.

İlgi yazı ve ekleri ilişikte sunulmakta olup, konuyla ilgili işlemleri gerçekleştirebilecek Türk bayraklı gemi olup olmadığı hususunda bilgilerin, Denizcilik Genel Müdürlüğü'ne iletilmek üzere, 05 Ağustos 2020 tarihi saat 14.00'a kadar Odamıza bildirilmesi hususunda bilgi ve gereğini arz ve rica ederim.

Saygılarımla,

*e-imza*Ender KAHYA  
Genel Sekreter V.

Bu belge, 5070 sayılı Elektronik İmza Kanuna göre Güvenli Elektronik İmza ile İmzalanmıştır.

Evrak Doğrulamak İçin : <https://ebys.denizticaretodasi.org.tr/enVision/Dogrula/LM5CRF>

Bilgi için: Meryem ÇELİK Telefon: 02122520130/254 E-Posta: meryem.celik@denizticaretodasi.org.tr

Meclis-i Mebusan Caddesi No: 22 34427 Fındıklı - Beyoğlu - İstanbul Türkiye

Tel : +90 (212) 252 01 30 Faks: +90 (212) 293 79 35

Web: [www.denizticaretodasi.org.tr](http://www.denizticaretodasi.org.tr) E-mail: [iletisim@denizticaretodasi.org.tr](mailto:iletisim@denizticaretodasi.org.tr) Kep: imeakdto@hs01.kep.tr.Odamızda  
ISO 9001:2015  
Kalite Yönetim  
Sistemi  
uygulanmaktadır.



**Ek:**

- 1- İlgili yazı (2 sayfa)
- 2- İlgili yazı eki (15 sayfa)

**Dağıtım:**

**Gereği:**

- Tüm Üyeler (WEB sayfası ve e-posta ile)
- İMEAK DTO Şube ve Temsilcilikleri
- Türk Armatörler Birliği
- S.S. Gemi Armatörleri Motorlu Taşıyıcılar Kooperatifi
- VDAD (Vapur Donatanları ve Acenteleri Derneği)
- TAİS (Türk Armatörleri İşverenler Sendikası)

**Bilgi:**

- Yönetim Kurulu Başkan ve Üyeleri
- İMEAK DTO Şube YK Başkanları
- İMEAK DTO Meslek Komite Başkanları



Bu belge, 5070 sayılı Elektronik İmza Kanuna göre Güvenli Elektronik İmza ile İmzalanmıştır.

Evrakı Doğrulamak İçin : <https://ebys.denizticaretodasi.org.tr/enVision/Dogrula/LM5CRF>

Bilgi için: Meryem ÇELİK Telefon: 02122520130/254 E-Posta: meryem.celik@denizticaretodasi.org.tr

Meclis-i Mebusan Caddesi No: 22 34427 Fındıklı - Beyoğlu - İstanbul Türkiye

Tel : +90 (212) 252 01 30 Faks: +90 (212) 293 79 35

Web: [www.denizticaretodasi.org.tr](http://www.denizticaretodasi.org.tr) E-mail: [iletisim@denizticaretodasi.org.tr](mailto:iletisim@denizticaretodasi.org.tr) Kep: imeakdto@hs01.kep.tr.



Odamızda  
ISO 9001:2015  
Kalite Yönetim  
Sistemi  
uygulanmaktadır.



T.C.  
ULA TIRMA VE ALTYAPI BAKANLI I  
Denizcilik Genel Müdürlü ü

Sayı :19463099-130.02.06-E.42455  
Konu :Yabancı bayraklı gemiler

30.07.2020

İMEAK DENİZ TİCARET ODASINA  
Meclis-i Mebusan Caddesi No: 22 Pk:34427 Fındıklı BEYOĞLU / İSTANBUL

İlgi : Devlet Su İşleri Genel Müdürlüğünün 29.07.2020 tarihli ve 43015 sayılı yazısı.

İlgi yazıda, Türkiye Cumhuriyeti Hükümeti ile Kuzey Kıbrıs Türk Cumhuriyeti (KKTC) Hükümeti arasında 19 Temmuz 2010 tarihinde imzalanan "KKTC'nin Uzun Vadeli Su İhtiyacının Karşılmasına İlişkin Hükümetler Arası Anlaşma"sı gereği Devlet Su İşleri (DSİ) tarafından gerçekleştirilen takribi 80 km uzunluğundaki "Deniz Geçişi İsale Hattı"nın 15 Haziran 2015 tarihi itibarıyla devreye alındığı, ancak söz konusu isale hattında 09 Ocak 2020 tarihine meydana gelen bir arıza nedeniyle KKTC'ye su iletiminin durdurulmak zorunda kaldığına değinilerek, arızanın tespitine yönelik yapılan sualtı tetkikleri neticesinde, 10 (on) adet askılı sistemin değiştirilmesinin gerektiğinin tespit edildiği ifade edilmektedir.

İlgi yazıda devamla, arızanın giderilmesi için öngörülen on adet segmentin sökülerek yenilerinin takılmasına yönelik deniz operasyonunun gerçekleştirilebilmesi için; spesifik olarak deniz veya açıkdeniz özellikli sualtı işlerinde kullanılmak üzere tasarlanıp imal edilmiş bulunan ve üzerinde yüksek kapasiteli vinçler bulunan, Dinamik Konumlama 2 (DP2) teçhizatlı, daha önce birçok denizaltı operasyonunda görev yapmış deneyimli mürettebat ile donatılmış Bahama bayraklı "OLYMIC CHALLENGER", İtalya bayraklı "IEVOLI IVORY", "ASSO VENTOTTO" ve "ASSO VENTIQUATTRO" isimli gemilerin KKTC'ye su temin edilmesi amacıyla tesis edilmiş isale hattındaki arızaların giderilmesi operasyonunda kullanılması amacıyla 03 Ağustos - 30 Kasım 2020 tarihleri arasında faaliyet izni verilmesi talep edilmektedir.

Bu itibarla, yukarıda isimleri anılan gemilerin teknik özellikleri ile ekipman bilgileri ilişikte gönderilmekte olup, Odanıza kayıtlı üyelerinizin envanterine söz konusu geminin eşdeğerinde ve yukarıda bahisi geçen onarım faaliyetini gerçekleştirme kabiliyetinde Türk bayraklı bir geminin olup olmadığı hakkındaki bilgilerin 05 Ağustos 2020 tarihi mesai sonuna kadar Bakanlığımıza bildirilmesi hususunda bilgilerinizi ve gereğini rica ederim.

 e-imzalıdır

Cem ERDEM  
Bakan a.

**Not: 5070 sayılı Elektronik İmza Kanunu gereğince bu belge elektronik imza ile imzalanmıştır.**

Evrak Doğrulama Kodu : GZEXCBJP Evrak Takip Adresi: <https://www.turkiye.gov.tr/udhb-ebys>  
Hakkı Turaylıç Caddesi No:5 06338 Emek / Çankaya / ANKARA

Bilgi için:Nurullah YÜCEL  
Denizcilik Uzmanı



T.C.  
ULAŞTIRMA VE ALTYAPI BAKANLIĞI  
Denizcilik Genel Müdürlüğü

Sayı : 19463099-130.02.06-E.42455  
Konu : Yabancı bayraklı gemiler

30.07.2020

Genel Müdür V.

Ek : Yabancı bayraklı gemilere ait bilgiler (15 sayfa)

Dağıtım:

İMEAK Deniz Ticaret Odasına  
Mersin Deniz Ticaret Odasına

**Not: 5070 sayılı Elektronik İmza Kanunu gereği bu belge elektronik imza ile imzalanmıştır.**

Evrak Doğrulama Kodu : GZEXCBJP Evrak Takip Adresi: <https://www.turkiye.gov.tr/udhb-ebys>  
Hakkı Turaylıç Caddesi No:5 06338 Emek / Çankaya / ANKARA

Bilgi için: Nurullah YÜCEL  
Denizcilik Uzmanı

# Operations

## TECHNICAL NOTE

### Vessel Handbook Olympic Challenger



2	20.06.2018	Issued for use	HMT	SWE	
1	24.05.2018	Issued for IDC	HMT	SWE	
Rev.	Date	Description	Origin	Checked	Approved
Document number: REACH-6900-TN-001					Rev.: 1
Client:		Client document number:			Client rev.:

**Revision Record**

Any changes after document has been issued for construction/ implementation shall be described below.

Rev.	Section	Description of changes
2		Vessel comments implemented.

**Table of contents:**

<b>1</b>	<b>INTRODUCTION.....</b>	<b>4</b>
1.1	Purpose .....	4
1.2	Document owner .....	4
1.3	Abbreviations, units and symbols.....	4
<b>2</b>	<b>VESSEL INFORMATION .....</b>	<b>5</b>
2.1	General.....	5
2.2	Main technical data .....	5
2.3	Engines and propulsion.....	6
2.4	DP System.....	6
2.5	General navigation equipment .....	7
2.6	Communication.....	7
2.7	Anti-Heeling .....	8
2.8	Cargo facilities dies .....	8
2.9	Lifesaving equipment .....	8
2.10	Helicopter operation.....	9
2.11	Accommodation .....	10
<b>3</b>	<b>MAIN DECK AND DECK EQUIPMENT .....</b>	<b>11</b>
3.1	General.....	11
3.2	Deck strength and loading capacity .....	12
3.3	Bulwark.....	12
3.4	Utility stations .....	14
<b>4</b>	<b>CRANES .....</b>	<b>18</b>
4.1	Main subsea crane 250Te.....	18
4.2	Deck cranes 3Te .....	22
4.3	ROV hangar crane 1,05Te .....	23
<b>5</b>	<b>WORK CLASS ROV SYSTEMS .....</b>	<b>24</b>
5.1	WROV system.....	24
5.2	Tether Management System (TMS).....	26
5.3	Launch & recovery system (LARS) for WROV – Moonpool system .....	28
5.4	Launch & recovery system (LARS) for WROV – Overside system .....	29
5.5	Umbilical.....	30
5.6	ROV Bottom interface frame .....	30
5.7	Standard ROV tooling onboard .....	<b>Error! Bookmark not defined.</b>
5.8	Control van (interior).....	31
<b>6</b>	<b>APPENDICES.....</b>	<b>32</b>

Fant ingen figurlisteoppføringer.

## 1 INTRODUCTION

### 1.1 Purpose

This document contains a collection of technical data about the vessel Olympic Challenger. The data has been collected from various technical documentation.

**Cautionary Statement:** This handbook is used to provide a single source of key data collated from a large number of separate source documents/drawings. All data provided herein is believed to be correct but not guaranteed, and subject to change without notice. Anyone whom use this data to make critical assumptions or decisions, should request the Vessel Manager to confirm any critical data or to check independent sources. Reach Subsea accept no liability for reliance on any information contained herein.

### 1.2 Document owner

This document is prepared by Reach Subsea operations department.

### 1.3 Abbreviations, units and symbols

**Table 1-1 Abbreviations used**

AHC	Active Heave Compensation
LARS	Launch and Recovery System
ROV	Remotely Operated Vehicle
WROV	Work Class ROV
TMS	Tether Management System
SWL	Safe Working Load
DP	Dynamic Positioning
DNV	Det Norske Veritas
VRS	Vertical Reference Sensor
MRU	Motion Reference Unit
DGPS	Differential Global Satellite Positioning
HiPAP	High Precision Acoustic Positioning
AIS	Automatic Identification System
VDR	Voyage Data Recorder
NMD	Norwegian Maritime Directorate
SOLAS	Safety of life at sea
IMO	International Maritime Organization
HCA	Helicopter Certifying Agency
STBD	Starboard
PORT	Portside
GFD	Ground Fault Breakers
SW	Seawater
CT	Constant tension

**Table 1-2 Units used**

Te	Metric tonnes, 1Te = 1000kg
kg	kilograms
m	meter
s	seconds
mm	millimeter
VAC	Volt Alternating Current
hp	Horsepower (1hp = 0,7457kW)
kgf	Kilogram-force (Force/g, g=9,81m/s)
kW	kilowatt, 1kW = 1000 J/s



Table 1-3 Symbols

$\psi$	Dynamic Amplification Factor (DAF)
--------	------------------------------------

## 2 VESSEL INFORMATION

### 2.1 General

Name	Olympic Challenger
Design	ROV 02 CD
Built	Aker Aukra
Year delivered	2008 (keel laid 2007)
IMO registration	9398292
Call sign	C6ZZ7
MMSI number	311073200
DNV GL id. number	27997
Flag state	Bahamas
Port of registration	Nassau
Classifications	DNV +1A1, E0, Dynpos-Autr (IMO III), DK(+), Helidk, Ice-C, Clean Design (as made valid January 2006), Naut-OSV (Letter of compliance), Comf-V(3)
Owner	Olympic Shipping KS
Manager	Olympic Shipping AS Holmsildgata 12, Fosnavåg Brygge 2 etg, 6090 Fosnavåg, Norway Phone: +47 70 08 12 24 (Chartering / Operations) Emergency phone: +47 70 08 12 00
Manager's contact person	Hans Ove Garnes Operations Manager – Olympic Shipping AS Phone: +47 70 08 12 31 / +47 970 98 095 <a href="mailto:hans.garnes@olympic.no">hans.garnes@olympic.no</a> cc: <a href="mailto:chartering@olympic.no">chartering@olympic.no</a>
Charterer	Reach Subsea AS Phone: +47 40 00 77 10 Emergency phone: +47 90 93 19 14
Charterer's representative	Name: Torstein Grutle, Project Manager Phone: +47 906 67 936 E-mail: <a href="mailto:tgr@reachsubsea.no">tgr@reachsubsea.no</a>

### 2.2 Main technical data

Length overall	105,9m
Length P.P	94,7m
Breadth	21,0m
Depth to main deck	8,5m
Draught	
- Design	5,8m
- Max.	6,6m
Displacement	
- Design draught	7476,4Te
- Max	8864Te (From stability booklet)
Tonnage:	
- Gross	6596Te
- Net	1979Te
- Light ship	4950Te
Main deck:	
- Area	1000m <sup>2</sup>
- Strength	10Te/m <sup>2</sup> AFT of frame #57

- Deck cargo capacity	5Te/m <sup>2</sup> FWD of frame #57 Moonpool 5Te/m <sup>2</sup> 2000Te
Fuel capacity	1350m <sup>3</sup>
Fuel consumption:	
- Max. speed	35,6 Te/day @ 16kts
- Service speed	17,5 Te/day @ 11,5kts
- DP	8,9 Te/day @ average conditions
- Port	2,7 Te/day
Speed:	
- Max. speed	16kts
- Service speed	11,5kts
Fresh water capacity	880m <sup>3</sup>
Water ballast	3700m <sup>3</sup>
Moonpool	7,2 x 7,2 m 4,8 x 4,8 m (Rov MoonPool)
Main crane	MacGregor Hydramarine 250Te AHC, 3000m main wire length 250Te @ 10m (double fall) 200Te @ 12m (single fall)
ROV handling	ODIM 12T Overboarding LARS ODIM 12T Moonpool system 2 x Millennium WROVs
Mooring equipment	
- Windlass	ABW 7018 – Anchor type SPEK (M-type) – 275m

### 2.3 Engines and propulsion

Total propulsion output	10500kW
Main engines / generators	13128kW 6 x Caterpillar 3516C DITA
Emergency generator	2 x Scania D116EMS
Aux generator	Caterpillar 3516C
Bow thruster	2 x 1500kW KaMeWa Ulstein, w/fixed pitch propeller
Azimuth thruster	1500kW Ulstein-Aquamaster TCNS 92/FP-220 CP
Stern thrusters	2 x 3000kW Rolls-Royce azimuth Contaz 25
Fuel grade	ISO F-DMA Max gravity 875kg/m <sup>3</sup>

### 2.4 DP System

Manufacturer	Kongsberg Maritime
Model	Kongsberg K-POS
ERN	99,99,99,80
Class notation	DP Class 2, DNV DYNPOS - AUTR

DP Sensors /1/	3 x VRS's:	1 x Seatex MRU D 2 x Seatex MRU 5
	3 x Gyros	3 x Sperry Marine Navigat X Mk 1
	2 x Wind Sensors	2 x Gill wind observer II Ultrasonic
DP Reference systems /1/	3 x DGPS	1 x Seatex DPS 116 1 x Seatex DPS 132 1x Seatex DPS 200
	Antennas for DGPS & Correction signals	2x GPS/Glonass
		2x IALA beacon Antenna
		1x Spotbeam Antenna
		1x Inmarsat Antenna
	2 x Seapath	2 x Seapath 200

	1 x Fanbeam	1 x Fanbeam Mk 4.2
	2 x HiPAP	2 x HiPAP 501 (ver. 2.14.7.77) HiPAPs can be used as 2 separate references.

Cymbal is installed on the HiPAP system, enabling the use of Cnode transponders.

DP capabilities can be found in: Dp Capability Analysis Olympic Challenger – Foot\_2465\_2\_RevF

Please note that the position of the Fanbeam is fixed with the coverage area seen in Figure 2-1 (position of Fanbeam is approximate).

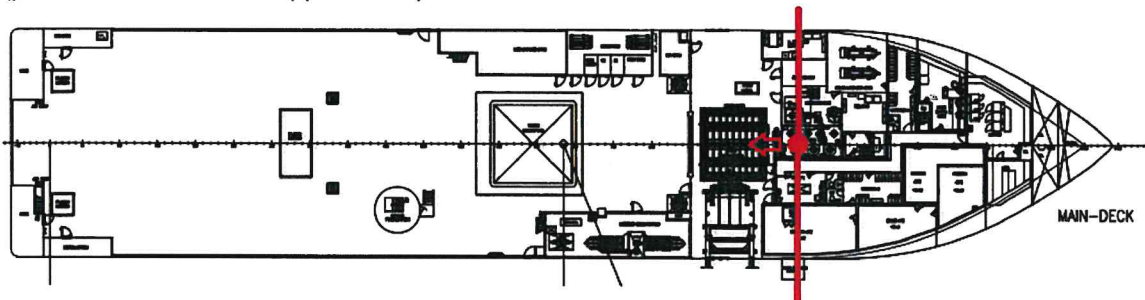


Figure 2-1 Fanbeam coverage area

## 2.5 General navigation equipment

HOLD – little info

Radars	X-band – 1x ARPA Radar Furuno S-Band – 1x ARPA S-band Furuno
AIS	1x FA-150 Furuno
Gyro	3x Navigate X MK 1 / 4914-CA
Autopilot	1x Sperry Marine C-plath Navipilot 4000
DGPS / GPS	Seatex DPS 116, Seatex DPS 132, Seatex DPS 200 GPS Furuno GP 150
VDR	Furuno VR-7000
Echo sounder	1 Skipper GDS 102
Charts	ECDIS, (2x) Furuno TECDIS
Navtex	Furuno NX-700A

## 2.6 Communication

### 2.6.1 General equipment

GMDSS Equipment MF/HF	Furuno FS-1570
GMDSS VHF	Thrane & Thrane A/S - RT 5022 VHF DSC Duplex - RT 5022 VHF DSC Duplex - RTC4900 VHF - 6248 VHF
GMDSS Marine satellite station	Inmarsat-C Furuno Felcom 15 / Satellite phone "Fleet 77"
VSAT High Speed Communications	Marlink – 8 phone lines.
VHF: Portable (Marine crew)	1x Handhold
VHF	5x Fixed
UHF	15x Handhold onboard

Helicopter communication/Aviation radio VHF/AM	Jotron – TR710
Internal communication	Internal telephone Clearcom between various working stations
Navtex/Weather Fax	Furuno NX-700B
COSPAS-SARSAT No 1&2 (Emergency satellite beacon)	Jotron - Tron 45SX - Tron 40S

### 2.6.2 UHF frequencies

UHF Channel	Frequency, MHz	PL, Hz
1	457,525	-
2	457,550	-
3	457,575	-
4	467,525	-
5	467,550	-
6	467,575	-
7	450,875	-
8	450,925	-
9	416,6125	-
10	416,6625	-
11	416,7875	-
12	418,9125	-
13	409,1375	-
14	407,1625	79,7
15	407,2125	79,9
16	407,2625	79,9

### 2.7 Anti-Heeling

Vessel is equipped with two anti-heeling tanks operated by reversible propeller pump. Remote control from IAS. Capacity 1500m<sup>3</sup>/h

### 2.8 Cargo facilities dies

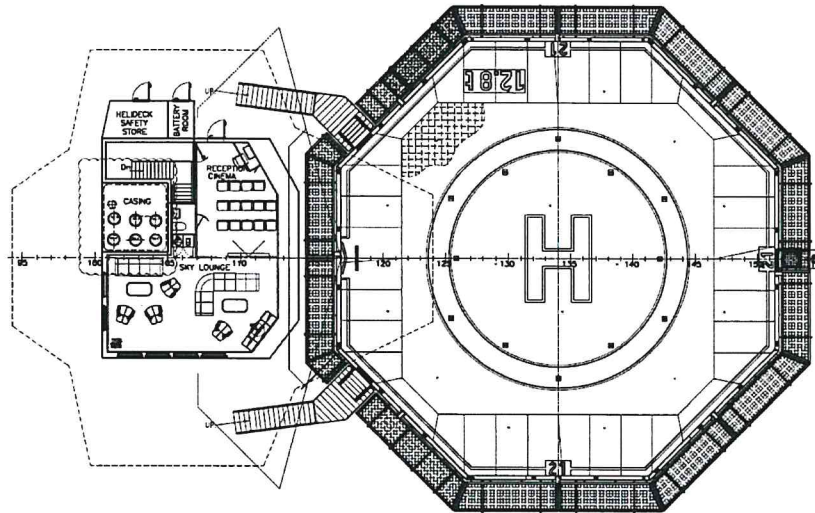
	Capacity
Marine diesel oil	1350m <sup>3</sup>
Ballast water	3700m <sup>3</sup>
Fresh water	880m <sup>3</sup>
- Transfer rate	75m <sup>3</sup>
- Fresh water make	30t/24h
Heeling tanks	HOLD

### 2.9 Lifesaving equipment

Olympic Challenger is equipped with lifesaving equipment for 100 persons, which is the maximum accommodation capacity onboard.

Safety equipment	Acc. To NMD/SOLAS
Life boat	2 x Jiangyin Wolong JY93C, capacity: 100
Life rafts	8 x Viking 25DK+S30, capacity: 25 IMO Res. A.761(18) SOLAS 74/96
Rescue boat	1 x WEEDO 700 (SOLAS 83) 6 persons
Survival suits	100 Pax
Breathing devices	HOLD

2.10 Helicopter operation



Helideck diameter/D-value	20,9m
Maximum take off weight	12,8t
Certification	CAP 437, BSL D 5-1, HCA
Certifying agency	Helideck Certification Agency (HCA)
Class	Heldk
Helicopter	S-92
Helideck monitoring system	Kongsberg Seatex HMS 100 SW
Other	Fitted with Frictape net.

With aircraft cat medium Cmn N.Sea on day time. limits are as follow	
Inclination Limit	3,5
Pitch/Roll	+ - 3
Avg. Heave Rate	1 m/s

With aircraft cat heavy Cmn N.Sea on day time. limits are as follow	
Inclination Limit	2,5
Pitch/Roll	+ - 2
Avg. Heave Rate	1 m/s

\*Wind is limited to helicopter requirements.

\*\*Environmental limits can be checked with HMS system on bridge.



**MARNALI** S. P. A.  
TRASPORTI MARITTIMI



## MPSV IEVOLI IVORY

### MAIN DESCRIPTION

Year Built	: July 2015
Vessel built	: Selah Shipyard – Tuzla (Turkey)
Type	: Standby Platform Supply Vessel / FiFi 1 / DP2 / Offshore AHC Crane / Helideck / MoonPool
Classification	: <b>RINA / ABS - C</b> <input checked="" type="checkbox"/> Supply Vessel, Heavy cargo, Fire fighting ship 1, Oil recovery (Flash point > 60°C)
Additional Notes	: <input checked="" type="checkbox"/> AUT_UMS, <input checked="" type="checkbox"/> DYNAPOS AM/ATR, GREENPLUS, INWATERSURVEY, DIVING SUPPORT, HELIDECK, COMF-NOISE, COMF-VIB, ROV, SPS Code – Resolution MSC.266(84)
Port of registry	: Naples n.558
Flag	: Italian
Call Sign	: IBKP
IMO Nr.	: 9703368
Regulations	: RINA, COLREG, Load Line, SOLAS Certificates, Tonnage Certificate, Marpol Annex I,II,IV,V, VI, IMO A493-494, IMO A749 (18), IMO 673 (16), IMO A325, ISPS Code, MSC 645, MSC 664, MSC 235 (82)

### MAIN PARTICULARS

Design	: MMC 887 MPSV
LOA	: 90,83 m
Length PP	: 86,56 m
Breath Moulded	: 18,80 m
Depth Moulded	: 7,40 m
Summer Draft	: 6,05 m
Gross tonnage	: 4499 Tonn
Net tonnage	: 1349 Tonn

### PERFORMANCE

Trial Speed	: 14,00 Knots
Cons. at 100%	: 920 Kg/h (approx)
At Economical Speed	: 350 Kg/h (approx)
DP h24	: 300 Kg/h (approx)
Port consumption	: 940 Kg/day (approx)
Type of Fuel	: M.G.O.

### CAPACITIES AND FACILITIES

Dead weight	: 4300 t (approx)
Deck cargo	: 1500 tons
Main Deck area	: 830 m <sup>2</sup>
Main Deck dimensions	: 52,00 m x 16,00 m
Main Deck strength	: 10 t/ m <sup>2</sup>
Main Deck Mission Storage	: 22 m <sup>2</sup> (Project duties)
Main Deck Electric Room	: 19 m <sup>2</sup> (ROV and Diving Oper)
Main Deck Workshop	: 18 m <sup>2</sup> (Ship's and Project duties)
Mezzanine Deck area	: 80 m <sup>2</sup> (ROV launching area)
Mezzanine Deck dimensions	: 16,00 m x 5,00 m
Total area for Project duties	: 970 m <sup>2</sup>

### DECK EQUIPMENTS

Capstans	: 2 x 10 t
Tugger Winches	: 2 x 10 t
Deck Crane	: 3 t @ 13mt telescopic
Offshore Subsea	: Mac Gregor HMC 3293 LKO (1000-11) AHC
Crane (AHC), 3000m	: 100t@11m Shipboard 100t@9m Offshore
Moon Pool	: 6,6m x 5,8m fitted with perimetral cofferdam and pneumatic bottom door

### CARGO CAPACITIES

Water Ballast / Drill Water	: 1429m <sup>3</sup>
Cargo Fresh water / Potable Water	: 1122 m <sup>3</sup>
Fuel Oil	: 1146 m <sup>3</sup>
Liquid Mud	: 1423 m <sup>3</sup>
Brine	: 240 m <sup>3</sup>
Dry Bulk	: 339 m <sup>3</sup>
Recovered Oil	: 240 m <sup>3</sup>
Methanol	: 240 m <sup>3</sup>
Base Oil	: 123 m <sup>3</sup>
Cargo and Ballast Monitoring System	: IAS - Fitted
Tank washing	: Available
Agitator LM Tanks System	: Available
Sewage Treatment Unit	: Available
Fresh water maker	: Available 15 Tonn/day

### CARGO PUMPS

Drill water	: 200 m <sup>3</sup> /h at 9 Bar
Potable water	: 200 m <sup>3</sup> /h at 9 Bar
Fuel oil	: 200 m <sup>3</sup> /h at 9 Bar
Base Oil	: 60 m <sup>3</sup> /h at 9 Bar
Liquid mud / Brine	: 3 x 150 m <sup>3</sup> /h at 15,5 Bar centrifugal
Liquid mud / ORO	: 1 x 100 m <sup>3</sup> /h at 24 Bar screw
Methanol	: 2 x 80 m <sup>3</sup> /h at 9 Bar

### DRY CARGO CAPACITIES

4 pressure tanks for bulk cement/barite	: 339 m <sup>3</sup> /732 t
Compressor capacity	: 1500 m <sup>3</sup> /h
Work pressure	: 6,0 bar
Discharging capacity	: 2 x 100 t/h at 90 m head
Pipe and manifold	: 2 x 5" Wecco

### PIPE LINE CONNECTIONS

Dry Bulk	: 5" Hammer Lug Union WEKO
----------	----------------------------

Liquid Mud : 5" Avery Hardoll CAMLOCK  
 Fuel oil : 5" Avery Hardoll Male CAMLOCK  
 Potable Water : 5" Hammer Lug Union WECO  
 Ballast Drill Water : 5" Hammer Lug Union WECO  
 Methanol : 5" Avery Hardoll CAMLOCK  
 Reducers Connections : 4" and 5" for each connection type

**GENERATORS AND PROPULSION**

Main generators Power : MAK - 2 x 8M25C + 6M25C  
 2 x 2534 kW + 2 x 2000 kW  
 Propellers : BERG - 2 x 2000 kW Azimuth Thrusters  
 Dia. 2650mm - Variable speed  
 Fixed pitch in nozzles  
 Tunnel thruster : Brunvoll 3 Tunnel Bow Thruster  
 3 x 900 Kw / 1224 Bhp  
 Emergency/Harbour generator : 1 x 375 kVA

**DP SYSTEM - MANOEUVRING**

DP Class : II  
 DP Maker and Type : Kongsberg / K-Pos DP-21  
 Gyro Compass : 3 NAVIGAT X Mk1  
 Position Reference Units : 3 x DGPS (110 -112-122)  
 1 x Radius 1000  
 1 x Light Weight Taut Wire Mk15/500  
 700m wire and 1 depressor weight  
 Acoustic Reference : 1 x Hipap 500 + 1 x Trunk available  
 Motion Reference : 2 x MRU-D + 1 x MRU-5  
 Wind Sensors : 3 x Gill Ultrasonic type  
 DP Alert System : YES  
 ERN : TBA  
 Joystick : Kongsberg C-Joy / Fully integrated  
 Serviceable from various wheelhouse positions + 1 portable

**HELICOPTER DECK**

Maker and Type : Marine Aluminium  
 DNV OS-E401 - Sikorsky S92 Suitability  
 Shape and Size : Octagonal - 22,20m  
 MTOW : Max 12,840 Tonn  
 Monitoring System : Kongsberg HMS 100

**NAVIGATION EQUIPMENT**

- 1x Radar, JRC JMA-5300, ARPA X-band
- 1x Radar, JRC JMA-5300, ARPA S-band
- 2x high resolution color display, radar plotter 19"
- 1x Radar repeater (slave radar) at aft wheelhouse console
- 1x DGPS JRC, JLR7800
- 1x Navtex JRC
- 1x Echo Sounder JRC
- 1x Speed Log
- 1x AIS, JRC A-Class
- 1x Gyro Compasses YOKOKAWA
- 1x Magnetic Compass PLATH
- 1x Autopilot Kongsberg
- 1x Doppler Log - Off Course Alarm JRC
- 1x BNWAS/1, NAVITRON
- 1x Voyage Data recorder

CCTV coverage for all key areas with display at Wheelhouse and ECR

**COMMUNICATION EQUIPMENT**

- GMDSS Station Area A1+A2+A3
- V-SAT SAILOR Data/Mail transfers/VoIP phone
  - 1 FBB 500 - VSAT backup
  - 1 MF/HF JRC DSC +ATIS
  - 2 VHF DSC JRC
  - 3 Emergency VHF JOTRON TRON
  - 2 INMARSAT C, JRC, JUE-85
  - 1 INM-C, SSAS, SAILOR
  - 1 EPIRB JOTRON TRON
  - 2 SART JOTRON TRON
  - 1 Public Address System
  - Talk Back System between DP station, Crane, Diving control Room, ROV control room

**ACCOMODATION**

Type of cabins	No. of cabins	No. Of berths
1 man cabins	9	9
2 men cabins	27	54
4 men cabins	6	24
Hospital / Dispensary	1	3
Total number of bunks	43 + 1	87 + 3

- Messroom /Daily room 40 persons  
 Recreation Rooms : Gym, Day Lounge Room, Smoking Room  
 Ship's Office : 1 off  
 Project Office : 1 off  
 Client's Office : 2 off  
 Meeting Room : 1 off  
 ROV Offline Room : 1 off  
 Sky Lobby : Fitted  
 Sat TV : Fitted

**FIRE FIGHTING**

*FiFi, class I*

The fire fighting system consists of the following main components:

- 2 off fire-fighting centrifugal pumps OGF300X400 COMBI capacity: 2000 m<sup>3</sup>/h head: 130 mlc 1800 rpm / 1024 Kw
- 2 single/dual flow monitors joystick controlled from bridge capacity: 1200 m<sup>3</sup>/h - 12,0 bar throw length – capacity full : 140 m
- Water spray system

**RESCUE AND LIFESAVING EQUIPMENT**

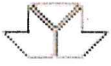
- 2 x Life Boats (48 persons each)
- 1 x Fast Rescue Boat (15 persons - 2 x 60HP outboard engines)
- 2 x Liferrafts (12 persons each)
- 2 x Search Light remotely controlled from bridge
- 1 x Hospital with treatment bench, racks for stretchers, Desk, medicine, poison locker
- 1x Dispensary with medical equipments / medicine in accordance with Flag's State and International requirements

This specification is subject to alteration without prior notice



**MARNAVI OFFSHORE S.r.l.**

**OPERATION & TECHNICAL MANAGER**



AUGUSTA  
OFFSHORE



## AHTS ASSO VENTOTTO

Year	2007
Flag	Italian
Builder	Kleven Maritime - Myklebust - Norway
Design	UT 734
Class society	RINA
Class notation	+Hull, +Mach, Tug, Supply Vessel, DP2, FiFi1, Water-Spraying, Oil Recovery Ship, Nav IL, Aut-UMS, Inwatersurvey, SPS, Standby, Rescue
IMO number	9379416





## AHTS Asso Ventotto - technical data

### GENERAL INFO

Year	2007
Flag	Italian
Builder	Kleven Maritime - Myklebust - Norway
Design	UT 734
Class society	RINA
Class notation	+Hull, +Mach, Tug, Supply Vessel, DP2, FiFi1, Water-Spraying, Oil Recovery Ship, Nav IL, Aut-UMS, Inwatersurvey, SPS, Standby, Rescue
IMO number	9379416

### MAIN PARTICULARS

Length OA	68,90 mt
DWT	2.450 T
Length BPP	60,45 mt
Breadth moulded	16,80 mt
Depth moulded	7,20 mt
Gross tonnage	2.554 T
Net tonnage	766 T
Maximum draft	6,15 mt

### CARGO CAPACITIES

Working Clear Deck - space	480 sqm
Working Clear Deck - length x breadth	31,5mt x 14mt
Max Deck Cargo	1.000 T
Deck loading	10T/sqm from stern roller to frame 7 x 8mt wide - 7T/sqm from frame 7 to frame 24 x 6mt wide - 5T/sqm wooden planking
Fuel Oil	756 cbm
Fresh Water	731 cbm
Drill Water	multipurpose - 1.047 cbm
Brine	multipurpose - 535 cbm
Mud	multipurpose - 535 cbm
Base Oil	dual purpose - 202 cbm
Dry Bulk	247 cbm
Number of Dry Bulk tanks	4

### MACHINERY/PROPULSION

Bollard pull continuous	140 T
Main Engines	2 x Bergen 33L6P 1.800 kW each 2 x Bergen 33L8P 2.400 kW each
Drive type (Direct/Diesel Electric)	Direct
Total power (BHP)	11.400
Rudders	Two off Ulstein High Lift Flap. Two independent electric-hydraulic steering gears
Bow thruster(s) (number and BHP)	2 x tunnel Ulstein TT 1650 - 900 BHP (V controllable pitch propellers)
Stern thruster(s) (number and BHP)	1 x tunnel Ulstein TT 1650 - 900 BHP (V controllable pitch propellers)
Shaft generator	2 x 2.400 kW - 440V - 60HZ
Diesel generator	2 x Volvo Penta 350kW - 440V - 60HZ
Emergency generator	1 x Volvo Penta 160kW - 440V - 60HZ
Fuel type - (MGO / IFO / HFO)	MGO

### ANCHOR HANDLING CAPACITIES

Winch Type - Double/Triple Drum	Brattvaag BSL 350W/SL350W - Double Drum waterfall
Winch - Pull Rating	350 (first line pull) T
Winch - Brake Rating	450 T
Anchor Handling Drum(s) wire capacity	2.540mt x 76mm
Towing Drum wire capacity	3.800mt x 76mm
Work wire A/H - length / diameter	800mt x 76mm + dead man 200mt
Tow wire - length / diameter	1.200mt x 76mm - break load 437 T
Spare tow wire - length / diameter	1.200mt x 76mm - break load 437 T
Tugger Winch (number / capacity / rating)	2 x 15T x 30 mt/min

Capstan	2 x 10T x 20 mt/min
Rig chain lifters (Gypsies)	2 x 76 mm / 2 x 94 mm

### DECK EQUIPMENT

Chain lockers	220 cbm
Stern Roller	5mt x 3mt diam - 500 T/SWL
Towing Pins (type and number)	2 off pair R.R.M. - 250 T/SWL
Shark Jaws - (type and number)	2 x Rolls Royce Karm fork, variable inserts and hydraulic centering device
Crane	3 T / 16mt

### CARGO DISCHARGE CAPACITY

Fuel Oil	200 cbm/hr at 9 bar
Drill Water	200 cbm/hr at 9 bar
Brine	75 cbm/hr at 18 bar
Mud	75 cbm/hr at 18 bar
Base Oil	100 cbm/hr at 9 bar

### SPEED/CONSUMPTION

Max Speed/Consumption	15,5 knots per 32 T/day
Economical Speed/Consumption	10 knots per 12 T/day
Port Consumption	0,5 T/day

### ACCOMODATION

Crew	12 single bed cabins + 3 double bed cabins (all cabins have private bathroom)
Passengers	2 four bed cabins (private bathroom)
Hospital	1

### FI-FI

FiFi	FiFi1
Number of monitors	2 x 1.200 cbm/hr
Number of pumps	2 x 1.800 cbm/hr

### ANTI POLLUTION EQUIPMENT

Dispersant	10 cbm
Oil Recovery capacity	not dedicated - 606 cbm

### RESCUE EQUIPMENT

Rescue Zone	Yes
Rescue Boat	1 x 6persons - 530 MIDGET MK II - 75HP
Inflatable life rafts	6 - 96 persons in total
Life jackets	41 (including 2 x children)

### NAVIGATION AND COMMUNICATION EQUIPMENT

Joystick (Yes / No)	Yes
DP	Class2
Radar (number and type)	2 x Baybridge X band and S band
GMDSS	3 x Jotron TR 20
Inmarsat	2 x Thrane&Thrane TT-3042C + 1 x JRC JUE500 + 1 x VSAT KU Band + 1 x TV SAT
VHF	2 x Thrane&Thrane RT 5022
DGPS/GPS	2 x DGPS Kongsberg DPS 200 and DPS 132 + Leica GPS MX 420
Echo sounder	Sperry ES 5100
Speed log	Yes
Gyroscopic compass	3 x Sperry Navigat X MK 1
Automation	Sperry Navipilot V HSC



AUGUSTA  
OFFSHORE



## AHTS ASSO VENTIGUATTRO

Year	2001
Flag	Italian
Builder	Orskow - Frederikshavn - Denmark
Design	UT 728
Class society	RINA
Class notation	+hull, +mach; tug; supply vessel - standby; oil recovery ship; Nav IL; FFQ-2; AUT-UMS; DP2
IMO number	9235294



**GENERAL INFO**

Year	2001
Flag	Italian
Builder	Orskow - Frederikshavn - Denmark
Design	UT 728
Class society	RINA
Class notation	+hull, +mach; tug; supply vessel - standby; oil recovery ship; Nav IL; FFQ-2; AUT-UMS; DP2
IMO number	9235294

**MAIN PARTICULARS**

Length OA	69,40 mt
DWT	2.000 T
Length BPP	59,40 mt
Breadth moulded	16,80 mt
Depth moulded	7,50 mt
Gross tonnage	2.469 T
Net tonnage	740 T
Maximum draft	6,10 mt

**CARGO CAPACITIES**

Working Clear Deck - space	450 sqm
Working Clear Deck - length x breadth	32,50mt x 13,50mt
Max Deck Cargo	1.000 T
Deck loading	10T from stern roller to frame 8 x 8mt - 10T from frame 8 to frame 27,50 x 6mt - 5T wooden planking
Fuel Oil	856 cbm
Fresh Water	633 cbm
Drill Water	dual purpose - 832 cbm
Brine	multipurpose - 440 cbm
Mud	multipurpose - 440 cbm
Dry Bulk	232 cbm
Number of Dry Bulk tanks	4

**MACHINERY/PROPULSION**

Bollard pull continuous	155 T
Bollard pull max	158 T
Main Engines	2 x MAK 9M25 - 3.680 BHP each 2 x MAK 8M25 - 3.270 BHP each
Drive type (Direct/Diesel Electric)	Direct
Total power (BHP)	13.900
Rudders	Two off Ulstein High Lift flap rudders. Two independent electric-hydraulic steering gears
Bow thruster(s) (number and BHP)	2 x Ulstein 250TV - 1.000 HP
Stern thruster(s) (number and BHP)	1 x Ulstein 250TV - 1.000 HP
Shaft generator	2 x 2.400 kW - 440V - 60HZ each
Diesel generator	2 x 370kW - 440V - 60HZ each
Emergency generator	1 x 164 kW - 440V - 60HZ
Fuel type - (MGO / IFO / HFO)	MGO

**ANCHOR HANDLING CAPACITIES**

Winch Type - Double/Triple Drum	Brattvaag BSL 380W/SL 380W - Double Drum waterfall
Winch - Pull Rating	380T x 7m/min double drive first layer T
Winch - Brake Rating	550 T
Anchor Handling Drum(s) wire capacity	1 x 3600mt x 76 mm
Towing Drum wire capacity	4879mt x 76mm
Work wire A/H - length / diameter	600 mt x 76mm + 200 x 77mm
Tow wire - length / diameter	1200mt x 77mm - break load 440T
Spare tow wire - length / diameter	1200mt x 77mm - break load 440T
Tugger Winch (number / capacity / rating)	2 x Brattvaag x 15T x 21mt/min
Capstan	2 x Brattvaag x 10T x 22mt/min
Rig chain lifters (Gypsies)	2 x 76mm / 2 x 90mm

**DECK EQUIPMENT**

Chain lockers	260 cbm
Stern Roller	5mt x 3mt diam - 550 T/SWL
Towing Pins (type and number)	4 x 240 T/SWL (Closed Top)
Shark Jaws - (type and number)	2 Karm Fork 130701 for wire chain with MBL up to 500T
Crane	2 T / 16m

**CARGO DISCHARGE CAPACITY**

Fuel Oil	200 cbm/hr at 9 bar
Fresh Water	200 cbm/hr at 9 bar
Drill Water	200 cbm/hr at 9 bar
Brine	75 cbm/hr at 18 bar
Mud	75 cbm/hr at 18 bar

**SPEED/CONSUMPTION**

Max Speed/Consumption	16,50 knots per 38 T/day
Economical Speed/Consumption	10 knots per 11 T/day
Port Consumption	0,5 T/day

**ACCOMODATION**

Crew	13 single beds
Passengers	3 four beds

**FI-FI**

FiFi	FiFi2
Number of monitors	2
Number of pumps	2 x 3.647 cbm/hr each

**ANTI POLLUTION EQUIPMENT**

Dispersant	6,8 cbm
Oil Recovery capacity	not dedicated - 654 cbm

**RESCUE EQUIPMENT**

Rescue Zone	Yes
Rescue Boat	1 x 6 persons - ALUSAFE MOB 600 - 130 HP
Inflatable life rafts	4 - 25 persons in total
Life jackets	31 + 2 (for children)

**NAVIGATION AND COMMUNICATION EQUIPMENT**

Joystick (Yes / No)	Yes
DP	Class2
DP type	Kongsberg SDP Simrad
Radar (number and type)	2 x Furuno RDP-124
Inmarsat	1 x Thrane&Thrane TT3020 C Capsat + 1 x JRC JUE 251 +1 VSAT KU Band
VHF	2 x Thrane&Thrane VHF/DSC
Echo sounder	Furuno FE-700
Radio Telex	Sperry SRD 331
Gyroscopic compass	Litton SR 180 MK1
Automation	Sperry ADG 3000VT