



Sayı : 38591462-730.99-2020-2276

25.08.2020

Konu : Gemilerde COVID-19 Vaka Riskini Azaltmaya
Yönelik Prosedürler Hk.

Sirküler No: 941

Sayın Üyemiz,

Uluslararası Deniz Ticaret Odası (International Chamber of Shipping – ICS) tarafından gönderilen 25.08.2020 tarihli Ek'te sunulan e-posta yazısında;

COVID-19 vakası tespit edilen gemilerde, gemi işletmecilerine yardımcı olmak amacıyla ICS, Uluslararası Bağımsız Tanker Sahipleri Birliği (International Association of Independent Tanker Owners – INTERTANKO) ve Uluslararası Deniz Sağlığı Birliği (International Maritime Health Association – IMHA) ortaklığında yeni protokollerin hazırlandığı bildirilmektedir.

Yazıda devamla, söz konusu protokoller kapsamında iki yeni yardımcı programın hazırlandığı belirtilmekte olup, çok sayıda COVID-19 vakası tespit edilen gemilerde süreci yönetmek amacıyla uygulanacak işlemlerin belirlenmesine yönelik bir iş akış şemasının oluşturulduğu; olası bir vaka tespit edilmesi durumunda veya gemiye binilmeden önce yapılacakların tanımlanmasına ilişkin olarak ise PCR testi prosedür matrisinin oluşturulduğu ifade edilmektedir.

Söz konusu COVID-19 vakalarının görüldüğü gemilerde riski azaltmaya yönelik hazırlanan protokollere ilişkin detaylı bilgi Ek'te sunulmaktadır.

Bilgilerinize arz/rica ederim.

Saygılarımla,

İsmet SALİHOĞLU
Genel Sekreter

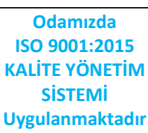
Ek:

ICS'den alınan 25.08.2020 tarihli yazı. (11 sayfa)

Dağıtım:

- Tüm Üyeler (WEB Sayfası)

Bu belge, 5070 sayılı Elektronik İmza Kanuna göre Güvenli Elektronik İmza ile İmzalanmıştır.



Evrakı Doğrulamak İçin : <https://ebys.denizticaretodasi.org.tr/enVision/Dogrula/K45ETT>
Bilgi için: İrem SELEN **Telefon:** 02122520130/456 **E-Posta:** irem.selen@denizticaretodasi.org.tr
Meclis-i Mebusan Caddesi No:22 34427 Fındıklı-Beyoğlu-İSTANBUL/TÜRKİYE
Tel : +90 (212) 252 01 30 (Pbx) **Faks:** +90 (212) 293 79 35
Web: www.denizticaretodasi.org.tr **E-mail:** iletisim@denizticaretodasi.org.tr **KEP:** imeakdto@hs01.kep.tr



From: Jade Smith <Jade.Smith@ics-shipping.org>

Sent: Tuesday, August 25, 2020 1:27 PM

Subject: COVID-19(20)134 - CORONAVIRUS (COVID-19) PROTOCOLS TO MITIGATE THE RISKS OF CASES ON BOARD SHIPS

**TO: LABOUR AFFAIRS COMMITTEE
ALL MEMBERS & ASSOCIATE MEMBERS
BI WEEKLY MEMBERS MEETING PARTICIPANTS
INTERNATIONAL ASSOCIATION GROUP PARTICIPANTS**

CORONAVIRUS (COVID-19) PROTOCOLS TO MITIGATE THE RISKS OF CASES ON BOARD SHIPS

Action Required: Members are invited to note the publication of the new protocols introduced to mitigate the risks of Cases of Covid 19 on board ships. Members are encouraged to share these with their respective contacts. The protocols have been produced jointly by ICS, Intertanko and IMHA. They will also be added to the ICS Covid Medical Guidance document when this is next updated.

**Natalie Shaw
Director Employment Affairs**



**International
Chamber of Shipping**

Shaping the Future of Shipping



ICS respects your data privacy. If you would like to know more about our data privacy policy, please follow this link [<http://www.ics-shipping.org/privacy>].

This email is confidential and may be protected by legal privilege. Access to this email by any person other than the addressee is unauthorised. If you have received this email in error, any disclosure or copying of or reliance upon the information contained in it is prohibited; please contact the sender immediately by return email and delete it from your computer. We do not warrant that this email and any attachments are virus free.

International Chamber of Shipping Limited, No. 2532887
Maritime International Secretariat Services Limited, No. 02560682
Registered in England at 38 St Mary Axe London EC3A 3BH



This email has been scanned for email related threats and delivered safely by Mimecast.
For more information please visit <http://www.mimecast.com>



This Circular and its attachments (if any) are confidential to the intended recipient and may be privileged. If you are not the intended recipient you should contact ICS and must not make any use of it.

25 August 2020

COVID19(20)134

**TO: LABOUR AFFAIRS COMMITTEE
ALL MEMBERS & ASSOCIATE MEMBERS
BI WEEKLY MEMBERS MEETING PARTICIPANTS
INTERNATIONAL ASSOCIATION GROUP PARTICIPANTS**

CORONAVIRUS (COVID-19) PROTOCOLS TO MITIGATE THE RISKS OF CASES ON BOARD SHIPS

Action Required: Members are invited to note the publication of the new protocols introduced to mitigate the risks of Cases of Covid 19 on board ships. Members are encouraged to share these with their respective contacts. The protocols have been produced jointly by ICS, Intertanko and IMHA. They will also be added to the ICS Covid Medical Guidance document when this is next updated.

Background

As we progress through the COVID-19 pandemic, it is vital to keep trade moving. To do that, we must ensure that crew can embark and disembark safely and efficiently.

ICS, IMHA and INTERTANKO have created two tools to help ship operators manage cases on board: a flowchart to help identify the process to follow when managing a larger number of suspect cases of COVID-19 on board; and a PCR testing procedures matrix to help identify what to do and when prior to boarding and if a suspect case is identified on the ship.

Decision Making for On Board Suspected or Confirmed COVID-19 Cases

A flowchart included identifies the process to follow when managing a larger number of potential cases of Coronavirus (COVID-19) on board. If COVID-19 cannot be satisfactorily excluded, seafarers must be treated as positive cases until further assessment shoreside or complete resolution of symptoms and isolation for 14 days. Isolation is critical in attempting to control the spread of disease on board. During the isolation period the seafarers should not work and should be disembarked at the nearest appropriate port. In deciding on the nearest appropriate port, medical facility capabilities ashore should be considered.

Affected seafarers should not be allowed to work and a risk assessment should be undertaken to ensure that the ship can safely undertake operations. Due regard should be taken of the safe manning certification and close liaison with the flag State must be maintained.

Isolate all patients in the sickbay, or in their own cabins, and ensure they wear medical face masks when mixing with other people. Patients should have access to bathrooms not used by others.

PCR Testing Procedures Matrix

A PCR testing procedures matrix is also included identifying what to do and when prior to boarding and also if COVID-19 is identified on board a ship.

Evidence suggests that asymptomatic persons still carry COVID-19 and transmit it to others.

Testing:

-
- Can identify persons not identified by other screening measures;
- Should ideally be conducted on embarkation in ports or terminals, where tests are available by port health authority representatives; and
- Should currently be conducted using polymerase chain reaction (PCR) tests, which involve a swab of the nose or throat. This recommendation may change once new tests are available.

Any seafarers testing positive should not board the ship and should receive further medical assessment or tests.

A negative PCR test does not guarantee seafarers are not infected with COVID-19 and could still potentially carry it on board the ship.

Any seafarers about to join the ship developing any symptoms should not be boarded and should receive further medical advice.

The ability to test seafarers before embarkation depends on many factors including testing availability in ports and terminals.

Natalie Shaw
Director Employment Affairs



International
Chamber of Shipping
Shaping the Future of Shipping



IMHA



INTERTANKO

Coronavirus (COVID-19)

Protocols to Mitigate the Risks of Cases On Board Ships



Version 1.0 - 26 August 2020

Coronavirus (COVID-19)

Protocols to Mitigate the Risks of Cases On Board Ships

Published by
Marisec Publications
38 St Mary Axe
London EC3A 8BH

Version 1.0 – 26 August 2020

Tel: +44 20 7090 1460
Email: publications@ics-shipping.org
Web: www.ics-shipping.org

© International Chamber of Shipping, IMHA and INTERTANKO

While the advice given in this Guidance has been developed using the best information available, it is intended purely as guidance to be used at the user's own risk. No responsibility is accepted by Marisec Publications or by the International Chamber of Shipping, IMHA, INTERTANKO or by any person, firm, corporation or organisation who or which has been in any way concerned with the furnishing of information or data, the compilation, publication or any translation, supply or sale of this Guidance for the accuracy of any information or advice given herein or for any omission herefrom or from any consequences whatsoever resulting directly or indirectly from compliance with or adoption of guidance contained therein even if caused by a failure to exercise reasonable care.



The International Chamber of Shipping (ICS) is the global trade association representing national shipowners' associations from Asia, the Americas and Europe and more than 80% of the world merchant fleet. Established in 1921, ICS is concerned with all aspects of maritime affairs particularly maritime safety, environmental protection, maritime law and employment affairs. ICS enjoys consultative status with the UN International Maritime Organization (IMO).

1. Introduction

As we progress through the COVID-19 pandemic, it is vital to keep trade moving. To do that, we must ensure that crew can embark and disembark safely and efficiently.

ICS, IMHA and INTERTANKO have created two tools to help ship operators manage cases on board: a flowchart to help identify the process to follow when managing a larger number of suspect cases of COVID-19 on board; and a PCR testing procedures matrix to help identify what to do and when prior to boarding and if a suspect case is identified on the ship.

2. Decision Making for On Board Suspected or Confirmed COVID-19 Cases

A flowchart attached at Annex A identifies the process to follow when managing a larger number of potential cases of Coronavirus (COVID-19) on board. If COVID-19 cannot be satisfactorily excluded, seafarers must be treated as positive cases until further assessment shoreside or complete resolution of symptoms and isolation for 14 days. Isolation is critical in attempting to control the spread of disease on board. During the isolation period the seafarers should not work and should be disembarked at the nearest appropriate port. In deciding on the nearest appropriate port, medical facility capabilities ashore should be considered.

Affected seafarers should not be allowed to work and a risk assessment should be undertaken to ensure that the ship can safely undertake operations. Due regard should be taken of the safe manning certification and close liaison with the flag State must be maintained.

Isolate all patients in the sickbay, or in their own cabins, and ensure they wear medical face masks when mixing with other people. Patients should have access to bathrooms not used by others.

3. PCR Testing Procedures Matrix

A PCR testing procedures matrix attached at Annex B identifies what to do and when prior to boarding and also if COVID-19 is identified on board a ship.

Evidence suggests that asymptomatic persons still carry COVID-19 and transmit it to others. Testing:

- Can identify persons not identified by other screening measures;
- Should ideally be conducted on embarkation in ports or terminals, where tests are available by port health authority representatives; and
- Should currently be conducted using polymerase chain reaction (PCR) tests, which involve a swab of the nose or throat. This recommendation may change once new tests are available.

Any seafarers testing positive should not board the ship and should receive further medical assessment or tests.

A negative PCR test does not guarantee seafarers are not infected with COVID-19 and could still potentially carry it on board the ship.

Any seafarers about to join the ship developing any symptoms should not be boarded and should receive further medical advice.

The ability to test seafarers before embarkation depends on many factors including testing availability in ports and terminals.



Coronavirus (COVID-19)

Protocols to Mitigate the Risks of Cases On Board Ships

Seafarers may become infected while travelling to a ship, so the best time to test for COVID-19 to reduce infection risks on board ship is in the port or terminal before embarkation, by isolating the seafarer ashore while awaiting the test result.

Testing before deployment to travel to a ship:

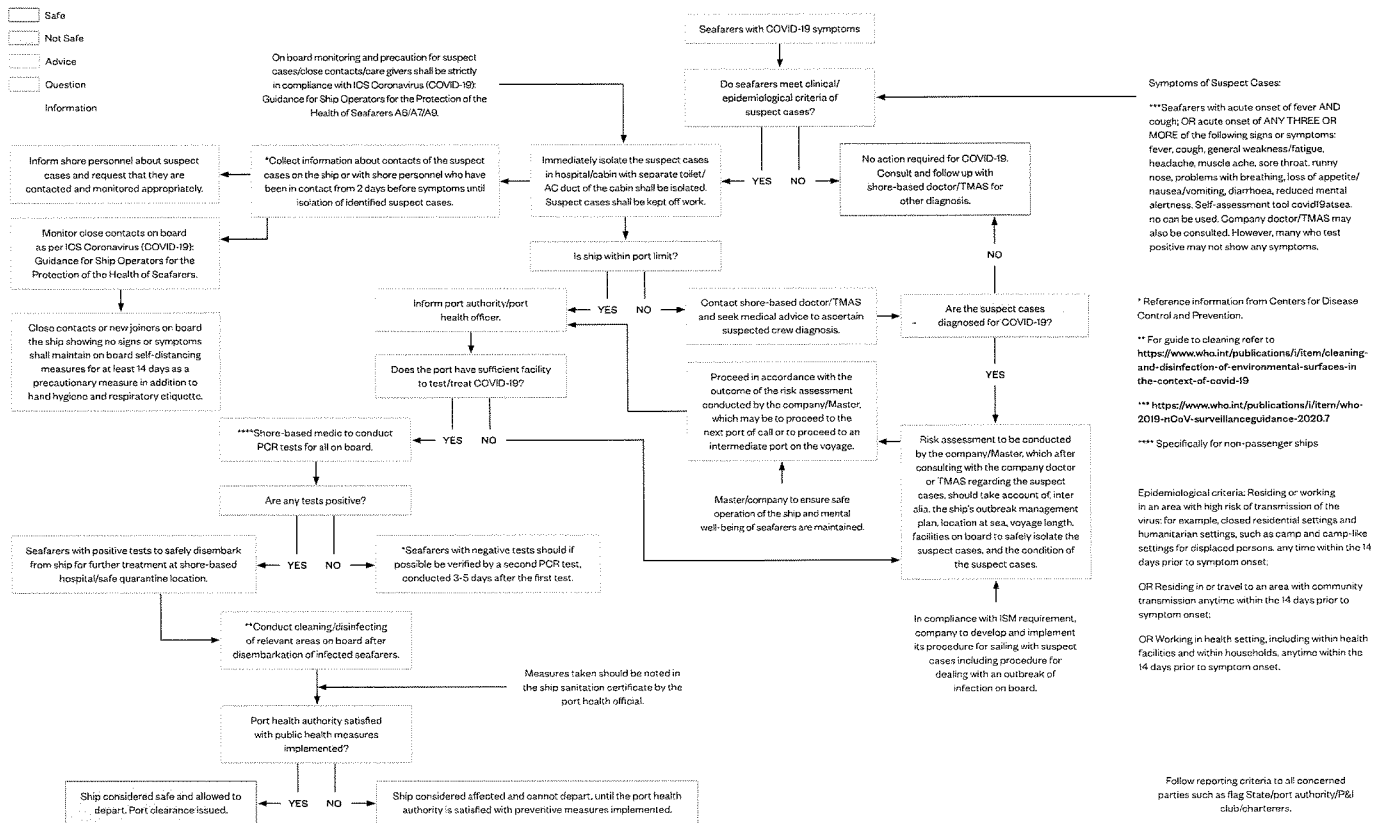
- Can reduce risks associated with COVID-19;
- May be a pre-requisite for travel by relevant authorities; and
- Avoids seafarers travelling to the ship who might not be allowed to board due to a positive test or screening upon embarkation and transmission to others during travel.

Early testing of seafarers suspected of having COVID-19 can help to mitigate spread to others on board ship and identify who else needs to be tested.



Coronavirus (COVID-19)
Protocols to Mitigate the Risks of Cases On Board Ships

Annex A
 Decision Making for On Board Suspected or Confirmed COVID-19 Cases

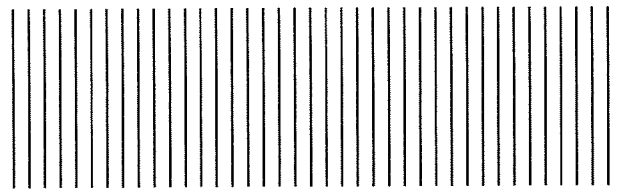


Coronavirus (COVID-19)
Protocols to Mitigate the Risks of Cases On Board Ships

Annex B
 PCR Testing Procedures Matrix

	PCR Testing Requirements for Travel to and from the Ship			Suspect Case PCR Testing Requirements as Directed by the Port Health Authority (PHA)	
	Pre departure from home to ship location	On arrival in country of embarkation of the ship	On arrival in the country of disembarkation from the ship for repatriation	Initial tests	Repeated testing of crew/close contacts
Required	Test to be taken according to the rules of the country of arrival before leaving the seafarer's country of origin. * Due diligence should be conducted by the company to ensure the certificate is valid and not fraudulent.	Verification by officials in the country of arrival of the seafarer's test certificate. If the certificate is not valid retesting will need to be conducted whilst isolating the seafarer ashore. When there is no testing by the State Authority, the company should use due diligence to ensure the certificate is valid and not fraudulent.	To avoid quarantine some countries of arrival require a negative PCR test result prior to arrival of a returning seafarer. Where required the test should be available to the seafarer in the port where they sign off the ship.	On arrival in port.	Repeated tests are taken 3-5 days after the second test.
If negative	Seafarers may travel from the country of origin with the testing certificate to ship.	Board ship after agreed quarantine if required and/ or repeat testing if required.	Leave the ship with testing certificate.	Remain in isolation for the period of time required by the PHA. Seek medical advice. †	Remain in isolation for the period of time required.*
If positive	Seafarers should not leave country of origin	Seek medical assistance and do not board ship.	Do not leave the ship and advise port health authorities.	Seek medical assistance and disembark for quarantine or isolate onboard.	Seek medical assistance and disembark for quarantine or isolate.
References / comments	* E.g. 48 hours for Singapore	Testing requirements for travel to and from the ship		*Testing Strategy for Coronavirus (COVID-19) in High-Density Critical Infrastructure Workplaces after a COVID-19 Case is Identified https://www.cdc.gov/coronavirus/2019-ncov/community/worker-safety-support/hd-testing.html	*Testing Strategy for Coronavirus (COVID-19) in High-Density Critical Infrastructure Workplaces after a COVID-19 Case is Identified https://www.cdc.gov/coronavirus/2019-ncov/community/worker-safety-support/hd-testing.html





International
Chamber of Shipping

Shaping the Future of Shipping

International Chamber of Shipping
38 St Mary Axe London EC3A 8BH

Telephone + 44 20 7090 1460
info@ics-shipping.org
www.ics-shipping.org